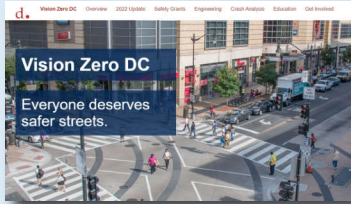




SymGEO

State and Local Government Specialists

TELL A STORY TO REMEMBER WITH YOUR DATA



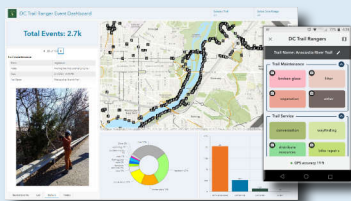
"The new Vision Zero DC website will help us work closely with community members to identify problems and build solutions. SymGEO iterated quickly and efficiently on design ideas and built a very engaging platform solution."

- District Department of Transportation (DDOT)



"SymGEO is a remarkably flexible and responsive company. They listen carefully to requirements and deftly blend customer vision with technological capabilities."

- DC Urban Forestry Associate Director



"As a field team that does a wide variety of outreach and maintenance tasks, ArcGIS QuickCapture has been great for record-keeping and storytelling of program impact."

- Outreach Director, Washington Area Bicyclist Association

SymGEO provides Geographic Information System (GIS) mapping solutions and digital community engagement platforms using Esri technology.

Located near Washington, DC, we specialize in state and local ArcGIS solutions. This includes data setup, application configuration, design, deployment, and platform maintenance. As a small, minority, woman-owned business, we deliver tremendous value to our partners. As a GSA IT Schedule 70 holder, we offer competitive rates and flexible staffing.

GIS MAPPING SOLUTIONS

- SymGEO leverages configurable, data-driven technology from Esri to inform and communicate decisions
- ArcGIS Dashboards, StoryMaps, Solutions, and Hub configurations
- Gain insight into spatial trends, outliers, and changes over time
- Mobile responsive for data collection and display on the go
- 3D data development and ArcGIS Urban configuration to visualize existing or proposed scenarios

COMMUNITY ENGAGEMENT

- SymGEO designs and implements ArcGIS Hub and StoryMaps to educate, empower, and engage communities
- Highlight key maps, data, reports, or applications by audience
- Enlist "people as sensors" to keep data fresh and current
- Incorporate surveys for two-way engagement and advocacy

www.symgeo.com/statelocalgov

GSA: IT Schedule 70 SIN:132-51
DUNS: 018843644
CAGE Code: 1X2A7



State and Local Government Specialty

A DIVISION OF SYM GEO



Partner Network Silver



ArcGIS System Ready Specialty



ArcGIS Marketplace Provider



Federal Small Business Specialty



Nonprofit Specialty



ArcGIS Hub Specialty

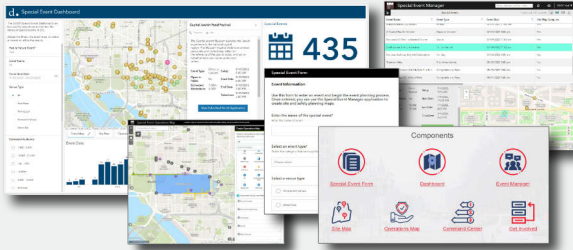


Esri Partner Conference 2023 Award Winner
Partner to Partner Collaboration

SymGEO, a division of Symago LLC
9841 Washingtonian Blvd., Ste 200-310
Gaithersburg, MD 20878

tel. 240-575-1215
engage@symgeo.com
www.symgeo.com

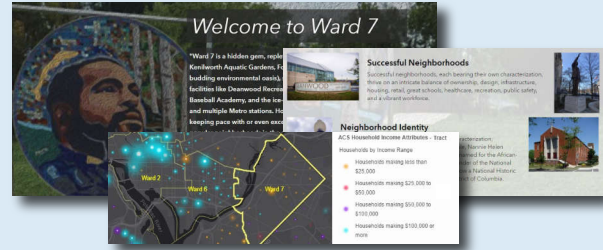
@sym_geo
linkedin.com/company/symgeo/
facebook.com/SymGEO.gis/



SPECIAL EVENT OPERATIONS

"The Special Events solution has sparked a new level of excitement in preparing for special events in the city. With SymGEO's technical help, DDOT now has improved internal communication and decision-making abilities. The training provided by SymGEO has been super beneficial – they are a treasure!"

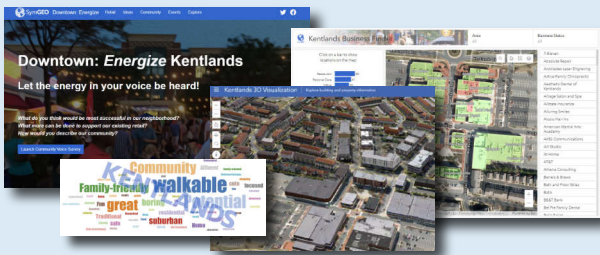
- DDOT Program Manager



WARD 7 OUTREACH

"The genius of SymGEO was exactly what I needed to help jump-start a discussion on the DC Comprehensive Plan/ Element Framework, transforming it from a boring review of data sets into an energizing discussion where people can clearly identify themselves in the data and endeavor to become change agents!"

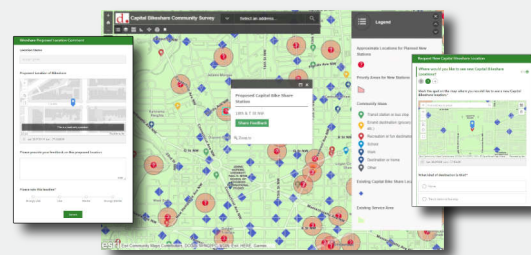
- Ward7 Outreach Committee Chair



DOWNTOWN: ENERGIZE KENTLANDS

"Downtown Energize! is an innovative digital tool that provides mapping of business locations to potential and existing customers in a format that is fun, easy to use, and flexible enough to accept updates and even track current events. It's a win-win for our community by empowering residents to engage with our local businesses and to energize our downtown!"

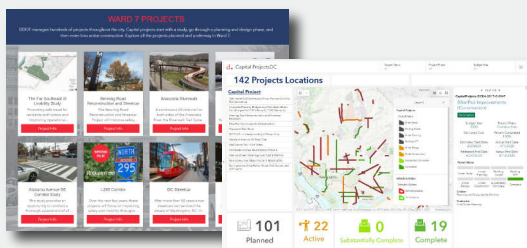
- Local Business Owner, Kentlands



CAPITAL BIKESHARE

"The SymGEO team helped us quickly implement a complex, public-facing tool with a simple user interface to help us gather a high volume of public input data, which is extremely useful for Capital Bikeshare planning purposes. Their knowledge of GIS and ESRI products helped make a challenging project with many stakeholders simple and quick to turn around."

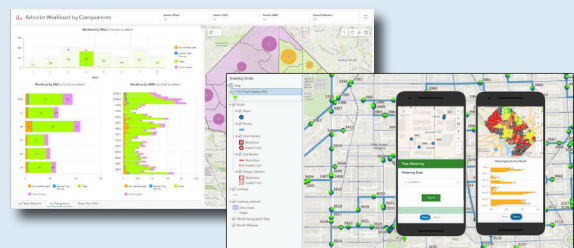
- Project Manager, Capital Bikeshare



CAPITAL PROJECTS HUB AND DASHBOARD

"The SymGEO team has helped DDOT transform our digital presence into a highly engaging, well-organized platform. They leverage GIS best-practices and Esri technology to produce visually informative and actionable solutions."

-DDOT Chief Performance Officer



SERVICE OPTIMIZATION AND LOAD BALANCING

"This is really slick, thank you! I have already been editing in a webmap, and watching things balance out on the dashboard. Very cool, thank you again!"

- DDOT Supervisory Urban Forester